



Installation Instructions

Front pet divider with rear seat saver
for Jeep Wrangler unlimited 2007-up
DD-P-JKFS-07

-Thank you for purchasing a Dirtydog 4x4 netting system. Please read these instructions fully to familiarize yourself with the installation. Set aside 20 minutes for the first time you install your pet divider. Your pet divider/seat saver comes in two main pieces. You start with the pet divider first.

In order to position the net properly. The dirtydog log faces forward. There are 2 long straps at the top that wrap over the roll bar and connect to the ladderloc sewn onto the net.Center them and snug them up.



The two straps that run out horizontally at the top go over top the roll bar and come out around the side. These connect into the cam buckles on the net. (see Photo). Tighten up both sides and position the net so everything is centered and hanging evenly



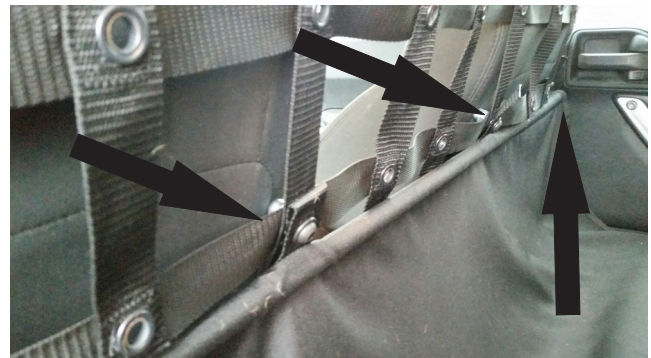
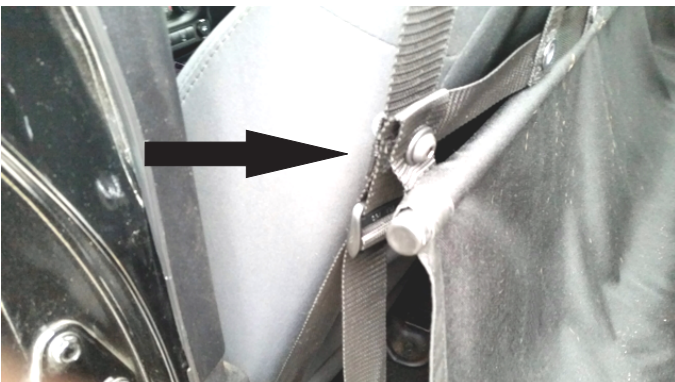
The long straps at the bottom pull down and wrap underneath the front seat seat brackets as shown. The straps come back up.



The next step is to attach it to outside ladderloc hanging off the bottom of the net. The pet divider portion is now installed.



Now to install the seat saver portion you need to insert the aluminum pole in the pocket on one side of the fabric. After this is done you will attach this to the pet divider using the nuts and bolts provided.



On the underside of the seat protector you will find a short piece of webbing attached with a snap. This piece wraps around the loop at the back of the seat as shown and snaps in place.



The last step is to install the final strap that reaches back to the rear roll bar and connects onto the ladderloc.



Adjust and tighten straps as needed to even out the net so it is positioned properly. Your pet divider comes with a three year warranty against manufacturing defects. Cuts, abrasions, sun faded items are not covered under the warranty.

Dirtydog 4x4
Mississauga, ON
Canada

1-855-704-0708

Question? Call or email orderdesk@dirtydog4x4.com